



CR500

CD-R/RW Master Recorder with 24bit /96kHz BWF Recording





CR500 Recording Features

CD-DA and BWF (stereo poly-file) recording
World's first BWF recording to UDF formatted discs

Up to 24bit/96kHz resolution
16bit/44.1kHz 48kHz, 24bit/44.1, 48 and 88.2kHz also available

BWF files compatible with PC workstations
Easy data transfer via simple 'cut & paste' instead of time-consuming real-time audio ripping

Digital I/O
AES/EBU and S/P DIF digital inputs and outputs

Analogue I/O
Balanced XLR and RCA inputs and outputs

Front mounted USB port
For connection of standard PC USB keyboard for file easy name editing and simple transport controls

CR500 Playback Features

Fader Start
For playback applications in a broadcast environment

Instant Play, Program Play and Cue Points
Program Play with up to 99 songs per disc, 10 memory points per disc and Instant Play make the CR500 ideal for Event and Installation playback applications

Digital Scrub
Digital scrubbing with waveform screen in 10 msec. step using the MENU dial.



CR500 Master Recorder

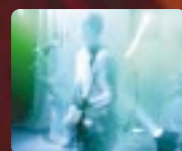
CD-DA/BWF Recording and CD-R/RW Mastering for the Modern Age.

Not only will the new Fostex CR500 professionally master stereo recordings to CD-R/RW, it also offers the world's first direct Broadcast WAV recording to a UDF formatted disc at up to 24bit/96kHz resolution.

This means, among other things, easy transport to Pro Tools® and other computer-based professional editing environments without audio ripping*.

And as a 'pro' mastering machine you get balanced XLR connections, easy track naming via a USB keyboard, LED meters. Plus instant play, fader start, 10 memory points / program play memories per disc and more.

CD-mastering, live recording, BWF file creation, stage, event and broadcast playback. - The new Fostex CR500.



CD Mastering



Event Playback



Broadcast Playback



Stage Playback

Fostex

Professional Mastering

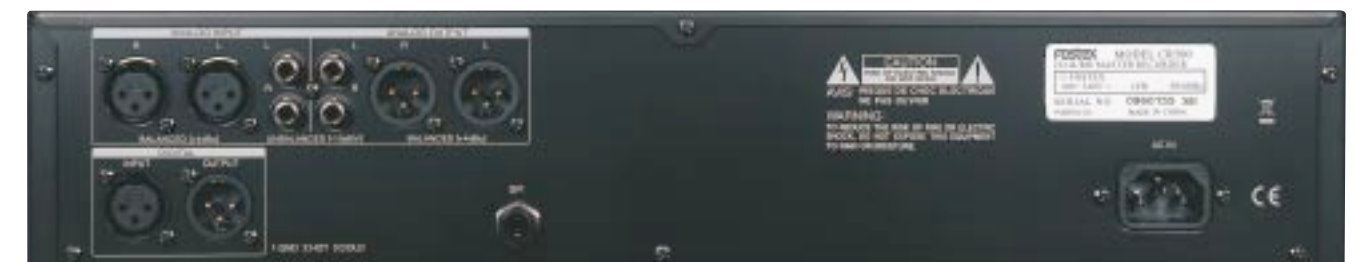
Equipped with 24bit quality at up to 96kHz and high precision laser technology you would expect the CR500 to deliver excellent quality recordings, and you would be right. Recording to standard recordable data CDs from a variety of analog and digital inputs, the CR500 generates discs of exceptional accuracy and integrity.

But that's not the whole story, because the CR500 is the world's first professional machine to offer direct BWF (Broadcasting WAV format) recording/generation to UDF formatted CD-R/RWs at up to 24bit/96kHz resolution.

And this is a big deal, as these discs can be recognised by PC editing systems directly (available on Windows XP only). No more time-wasting with real-time audio ripping, just simple 'cut & paste'. In addition, you get multi-record settings (16bit/44.1kHz and 48kHz plus 24bit/44.1, 48, 88.2 and 96kHz), easy track naming and simple transport controls via an 'off the shelf' USB keyboard and the kind of attention to detail you would expect from a professional master recorder designed by Fostex.

Flexible and Feature-Rich Playback

The CR500 is also perfectly equipped for today's professional playback environments. Equally at home in the conference centre, theatre, stadium or broadcast studio, it bristles with thoughtful features. For example, you can program 10 memory points per disc with a 100 disc memory, there's instant play for event applications, fader start for broadcast use, power-on play for installations and a flexible array of balanced and unbalanced digital and analog outputs.



Professional Interfacing

The CR500 is equipped with an impressive array of digital and analog inputs and outputs.

*CD recorded in BWF (UDF1.02) can be recognized only on Windows XP, not on Mac OS (as of May 2006)



CD Mastering



Stage Playback



Broadcast Playback



Event Playback

CR500 Specifications

RECORDING / PLAYBACK

GENERAL

Recording Media	CD-R, CD-RW
Sampling Frequency / Quantization	44.1kHz / 48kHz, 16bit
	44.1kHz / 48kHz / 88.2kHz / 96kHz, 24bit
File System	CD-DA (CD rec/repro)
	ISO9660 (CD-ROM, repro. only)
	UDF ver.1.02 (CD-ROM, rec/repro)
File Format	CD-DA, BWF-P
S/N	100 dB (typical)
Dynamic Range	100 dB (typical)
Reference Level	-12dBFS / -20dBFS
T.H.D.	less than 0.01 % (typical)

INPUTS/OUTPUTS

Analog Input (L/R, balanced)

Connector	XLR-3-31 type x2
Input Impedance	10k ohm or more
Standard Input Level	+4dBu
Maximum Input Level	+24dBu

Analog Input (L/R, unbalanced)

Connector	RCA pin jack x2
Input Impedance	10k ohm or more
Standard Input Level	-10dBV
Maximum Input Level	+10dBV

Analog Output (L/R, balanced)

Connector	XLR-3-32 type x2
Loaded Impedance	10k ohm or more
Standard Output Level	+4dBu
Maximum Output Level	+24dBu

Analog Output (L/R, unbalanced)

Connector	RCA pin jack x2
Output Impedance	10k ohm or more
Standard Output Level	-10dBV
Maximum Output Level	+10dBV

Phones

Connectors	Ø6mm Stereo Phone Jack x1
Loaded Impedance	8ohm or higher
Maximum Output Level	100mW (32ohm)

Digital Input (balanced)

Connector	XLR-3-31 type x1
Input Format	IEC60958 Part2 (S/P DIF)/IEC60958 Part3 (AES/EBU)
	Automatic detect

Digital Output (balanced)

Connector	XLR-3-32 type x1
Output Format	IEC60958 Part2 (S/P DIF)/IEC60958 Part3 (AES/EBU)
	Switchable

USB (for USB Keyboard only)

Connector	USB series A receptacle x1
GPI (for fader start)	
Connector	Ø6mm Phone Jack x1
Format	Short : Start / Open : Stop

PHYSICAL

Power requirements	AC 100V - 240V, 50/60 Hz
Power consumption	14 W
Weight (without package)	4.8 kg
Max. dimensions	482 (W) x 93.5 (H) x 321 (D) mm

RECORDABLE TIME (700MB CD-R/RW disc)

FORMAT (kHz/bit)	REC. TIME	MAX TRACK NO.
CD-DA (44.1/16)	79 min.	99 tracks
BWF (44.1/16)	66 min.	97 tracks
BWF (44.1/24)	44 min.	97 tracks
BWF (48/16)	61 min.	97 tracks
BWF (48/24)	40 min.	97 tracks
BWF (88.2/24)	22 min.	97 tracks
BWF (96/24)	20 min.	97 tracks

*actual recording time may vary depending on discs



Fostex®

Fostex®

www.fostex.jp

Fostex Company, 3-2-35 Musashino, Akishima, Tokyo, Japan 196-0021
Tel: +81 (0)42-546-4974 Fax: +81 (0)42-546-9222

Distributor / Authorised Dealer